

Quick Start for SerialMagic Pro PalmOS

SerialMagic Professional Edition - Version 2.7.5

PalmOS 3.5-5.4

(SerialMagic also available for OS X, BlackBerry, Symbian, Windows, Pocket PC, Linux X11)

Introduction

SerialMagic Pro will take serial data from a Bluetooth port, or the built-in RS232 serial port of a Palm device and enter it directly into virtually any Palm application that can accept Keypad or Graffiti input. This document describes how to perform initial setup of SerialMagic Pro on Palm OS with a LaserChamp or Flic Bluetooth scanner. It assumes a basic knowledge of using a Palm OS device.

Installation

SerialMagic can be installed using HotSync or by copying it to an SDIO card.

Install by HotSync

To install using HotSync, just install SerialMagic Pro as you would any Palm application. From the desktop double-click the SerialMagic PRC file and this should bring up the “PalmOne Quick Install” dialog with the SerialMagic application showing. Insure the proper “User” is selected from the Quick Install list, then HotSync the PalmOne device to install the SerialMagic software.

Install by SDIO

Copy the SerialMagic Pro PRC file to the PALM/Launcher folder of the SD card.

Registration

Start SerialMagic and enter your registration name and registration code. To open the registration dialog use the Palm Menu option from the SerialMagic main dialog, then select “Enter Registration Code” option. If the registration code is not entered, every few scans will display "UNLICENSED SerialMagic".

Register by HotSync ID

In the registration field, the HotSync ID should be displayed. To obtain a registration key, provide the HotSync ID to your supplier along with the registered user name. Enter the registered user name in “Reg Name:” field then enter the registration key provided by your supplier in the “Reg Code:” field.

Register by Device ID

In the registration field, the Device ID should be displayed. To obtain a registration key, provide the Device ID to your supplier along with the registered user name. Enter the registered user name in “Reg Name:” field then enter the registration key provided by your supplier in the “Reg Code:” field.

Start SerialMagic

Press the Home button on the Palm device and go to Applications. In the upper right insure that “All” is selected. The scroll down to find the SerialMagic icon, and tap it. The SerialMagic main dialog should display as shown below. Be sure the Bluetooth mode is selected as shown below left.

When using SerialMagic with devices connected to the Palm devices serial port insure “Serial port” mode is selected as shown below right. Note that the factory defaults for the LaserChamp and Flic 2122, and 2142 are Bit Rate of 4800, and Stop Bits 2.



Serial port Bluetooth

Last name: LaserChamp
Address: 00:A0:96:04:F6:23

- LaserChamp BT
- Choose new device
- Enable on Reset: ▼ Prompt

Start SerialMagic Actions



Serial port Bluetooth

- Bit Rate ▼ 4800
- Data Bits ▼ 8
- Stop Bits ▼ 2
- Parity ▼ None
- Flow Control ▼ None
- LaserChamp ▼ no ACK

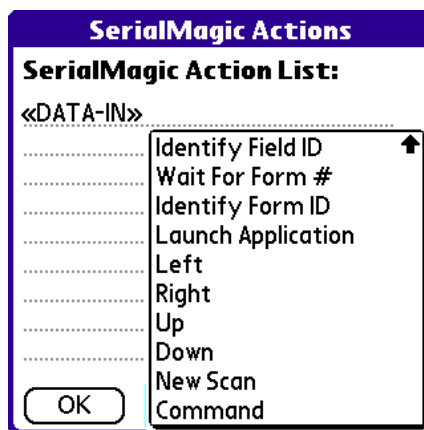
Start SerialMagic Actions

For The LaserChamp or Flic Bluetooth scanner, insure “Bluetooth” is highlighted. Insure “LaserChamp BT” is checked, and “Choose new device” is checked.

Tap “SerialMagic Actions” button to bring up the SerialMagic Actions dialog. "SerialMagic Actions" (SMAs) are optional actions that can be performed based on the data received. For example after scanning in data, SerialMagic Actions can be defined to 'tap' a button of the applications and perform a lookup on the data or some other processing function. SerialMagic Actions can also be defined to automatically switch to a target application before data is inserted.

In many cases the "Field Focus" SMA can be valuable to insure that the data ends up where it should be. If this option is not selected, data will be sent to Palm OS immediately upon receipt. If the cursor is not in the proper form & field when this occurs, this may not have the desired affect. Not all Palm OS applications however implement Palm fields.

Important Note: In SerialMagic Pro the SMA “Serial data in” must be selected in order to get data into the target application. This shows up in the Action List as <<DATA-IN>>.



SerialMagic Action Examples for SheetToGo

This example shows how to configure SerialMagic so that an incoming data packet (e.g. barcode scan) will switch to the Palm SheetToGo application (Microsoft Excel compatible) and enter the data in the spreadsheet. When SerialMagic is installed, the default SMA is <<DATA-IN>>.

With SerialMagic Professional 2.6.8 and later, there are some default example SerialMagic Action Profiles (SMAPs). When SerialMagic Professional is installed it will create these SMAPs. If they have been deleted or don't show up due to a SerialMagic upgrade, then they can be restored with the "Restore Default Profiles" menu option from the SerialMagic Actions dialog.

To select a default SMAP, from the SerialMagic Actions dialog select "Load Action Profile" and select one of the profiles from the list.

"Sheet – 1 Column" will enter successive scans in one column in the spread sheet. The SheetToGo application must be active.

"Sheet with Auto-Launch" is the same as "Sheet – 1 Column" except it will switch to the SheetToGo application if another application has focus.

"Sheet – 2 Columns" will switch to the SheetToGo application (if another application has focus) and will enter successive scans in two columns.

For more SerialMagic examples see the main SerialMagic documentation.

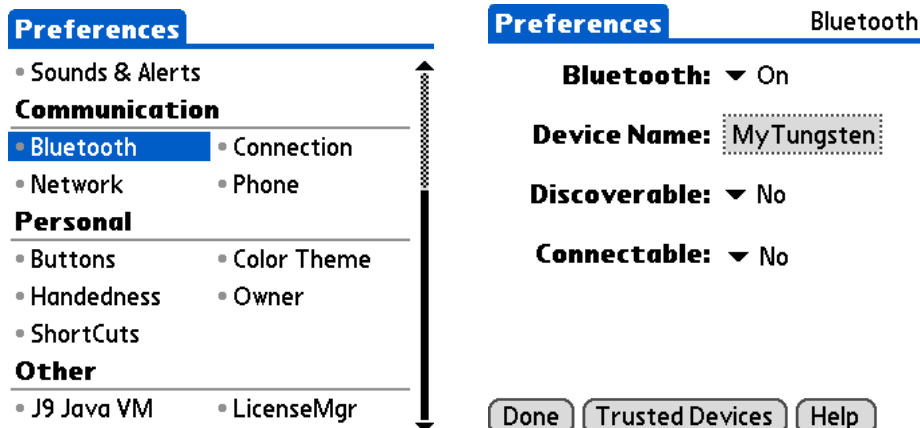
Pairing Trusted Devices

Note: The Palm Bluetooth Manager should only be used when SerialMagic is stopped.

Pair the Bluetooth device with Palm OS so the device is a **trusted device**. The following shows how to add a Bluetooth device to the list of trusted devices for Palm OS.

Launch Palm OS Prefs app from the System category then tap on the Bluetooth option as shown below-left, this will bring up the dialog as shown below-right with the name of your Palm device.

Note: On Tungsten T3 & T5 this is also available by tapping the Bluetooth icon from the Status Bar. On the Treo 650 tapping the Bluetooth icon near the battery at the top of the Palm display is also a shortcut.



The Trusted Devices dialog will be displayed, showing all trusted devices. When the Palm OS device is new, the list will be empty. Activate the Bluetooth device, and then tap on "Add Device". The image (below-left) shows adding a LaserChamp scanner as the first Bluetooth device to a Tungsten T3. Select the Bluetooth device from the list and tap OK. A dialog like the one shown below-right will appear briefly.

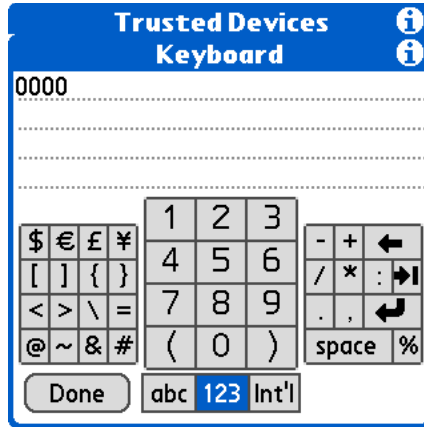
Note: When SerialMagic is active be sure that the Palm Bluetooth "Discoverable" option is set to "No" when used in the presence of a Bluetooth device that provides Bluetooth host side connectivity. For example a Bluetooth Access Point (BTAP). When the Palm Bluetooth "Discoverable" option is enabled the Palm may try to connect to the hosting device, preventing proper connection with the Bluetooth scanner.

Note on Tungsten T5 and Treo 650 devices: "Nearby Devices" is the equivalent to "Current Discovery" on the T3.



After the Bluetooth device is connected, you will be prompted to enter the Passkey for the device as shown below-left. The Passkey can be entered using the soft keypad by tapping the menu option and choosing "Keyboard", then tap the "123" button and tap 0 four times to get "0000" as shown below-right.

Tap "Done", on the soft Keyboard, and "Done" on the Bluetooth Security dialog. You should then see some dialogs briefly as the Bluetooth device is paired. The Trusted Bluetooth Device can now be used with SerialMagic.



LaserChamp & Flic Note: The scanner has a default connect time of 60 seconds. If the Bluetooth scanner becomes inactive before the Passkey is entered, a dialog showing "Unable to connect to LaserChamp" will appear. Activate the Bluetooth scanner, Tap "Try Again" and enter the Passkey again to get the pairing connection to complete.

Bluetooth Trusted Devices Note

If the device is not trusted when SerialMagic starts, Palm OS will prompt for a passkey (shown below-right) however the pairing will fail. Note the “Enter passkey...” dialog can be misleading in that it seems to indicate that the device can be added to the trusted list from this prompt. *This does not work due a bug in Palm OS (at least through version 5.4).*



Using a Trusted Device with SerialMagic

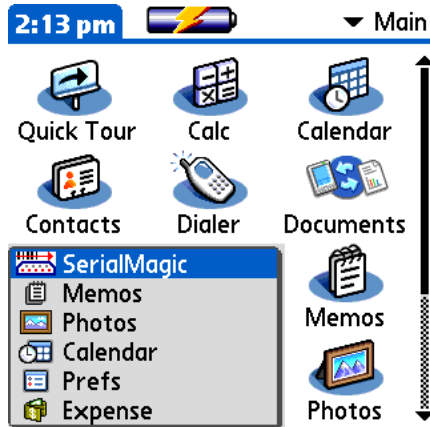
Once a device is trusted as described above, SerialMagic can now use the device. Run SerialMagic, then tap "Start" and you will see the list of devices in the Discovery Results dialog, (select “Current Discovery” or “Nearby devices” to select from active devices) and select the trusted device to connect to as shown below-left. Tap "OK" you should then see the SerialMagic connecting message as shown below-right.



After the SerialMagic connection is complete to the Bluetooth device, the SerialMagic "Start" button will change to "Stop". When the Bluetooth device goes inactive or out of range, the status message (to the right of the Start/Stop button) will read "(Disconnected)". As long SerialMagic is active in Bluetooth mode, it will continually attempt to connect to the last Bluetooth device that it had a connection with. During each connection attempt the status message will read "Reconnecting".
 Note: If the Bluetooth device goes inactive, or out of range during the time the Palm device attempts to connect, the error "Failed to connect Bluetooth port to other device." will be displayed.

Switching To Target Application

When SerialMagic is active and connected to the Bluetooth or tethered device, data sent by the device will go to the active field that has focus. Switch to the target application using the home button then selecting the application, or using the 'quick pick' menu if supported on the Palm device. The 'quick pick' menu from a Tungsten T3 is shown below. Once the target app is running, simply place the cursor in the desired field and scan the desired data into the application. If the proper SerialMagic Actions (SMA) are defined then you may not even need to place the cursor in the target field.



LaserChamp is a trademark of Serialio, LLC
Flic is a trademark of Microvision, Inc.
AirCable is a trademark of Wireless Cables, Inc.

Contact US

If you have questions or comments please contact us.
support@serialio.com